

**Minutes of Pre-Bid Conference (PBC) held on 22.06.2022
for procurement of Hostel Furniture.**

The Pre-Bid Conference for procurement of Hostel Furniture was held on 22.06.2022 virtually, as per tender conditions of GeM Bid No. GEM/2022/B/2228335 dated 03.06.2022.

The following were present:

From Buyer's Side:

Prof. S L Bapat, Dean, AP, Chairman
Prof. Nagesh Iyer, Dean (IPS)
Shri Ganesh Bhorkade, Registrar, IIT Bombay
Dr. D Lakshmanan, CAAO, SETS Chennai
Shri S Gnanaprakasam, Sr. CoSP, CSIR-CCMB, Hyderabad
Mr. Sundeep P, Executive Engineer
Mr. Rahul Raj, Jr. Engineer
Dr. Gopal Sharan Parashari, Asst. Professor
Mr. Anilkumar Angadi, Asst. Registrar (MMD) - Convenor

From Bidders' side

Sl. No	Company	Represented by
1	M/s. K.G.N Furniture, Mangalore	Sani Khan
2	M/s. Delite Furniture, Delhi	Girish Rawat
3	M/s. GeeKen Seating Collection Pvt. Ltd.	Bharat Kumar & Rohit Raj
4	M/s. Durian Industries Ltd., Mumbai	Mitesh Tank
5	M/s. Madhav Sales Corporation, Pune	Akash
6	M/s. Twenty First Century Techno Products Pvt Ltd., Bangalore	Rajkumar Singh
7	M/s. Machwel Engineering Services Pvt Ltd., Mumbai	Mr Sidharth
8	M/s. Diamond Industries, Coimbatore	K. Balachandran
9	M/s. Nilkamal Ltd., Bangalore	Mudit Chowdhury
10	M/s. S K Steel Industries, Bangalore	Karthik
11	M/s. Office Art, Bangalore	Vasu
12	M/s. Methodex Systems Pvt. Ltd., Bangalore	Santhosh Kumar N
13	M/s. Nirakar Engineering Pvt.Ltd., Karwar	Manoj Naik

Even though:

1. M/s. LVT Containers, Hubli, &
2. M/s Aykon System,

registered for attending the Pre Bid Conference, they did not attend the Pre-Bid Conference.

The Pre-Bid Conference started after brief welcome address by Convenor. As per tender conditions, the bidders should have sent mail on or before 17.06.2022 to seek clarifications during the Pre-Bid Conference. IIT Dharwad had received queries from

1. M/s. Delite Furniture, Delhi,
2. M/s. Twenty First Century Techno Products Pvt Ltd., Bangalore and
3. M/s. Machwel Engineering Services Pvt Ltd., Mumbai,

which were addressed during the Pre-Bid Conference. Further, during the Pre Bid Conference, the clarifications sought by bidders present were replied/responded by IIT Dharwad. Bidders present were also informed that IIT Dharwad will not entertain any request seeking clarifications beyond this Pre-Bid Conference and hence they were advised to seek clarification, if any during the Pre-Bid Conference itself. Bidders present were requested to make note of all clarifications given during the Pre-Bid Conference.

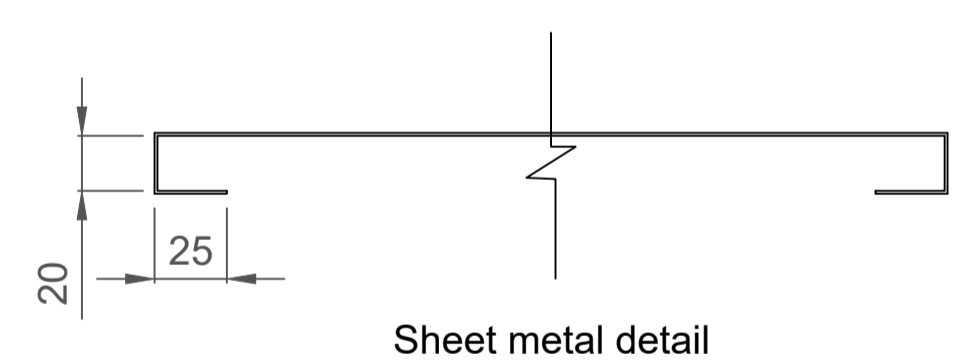
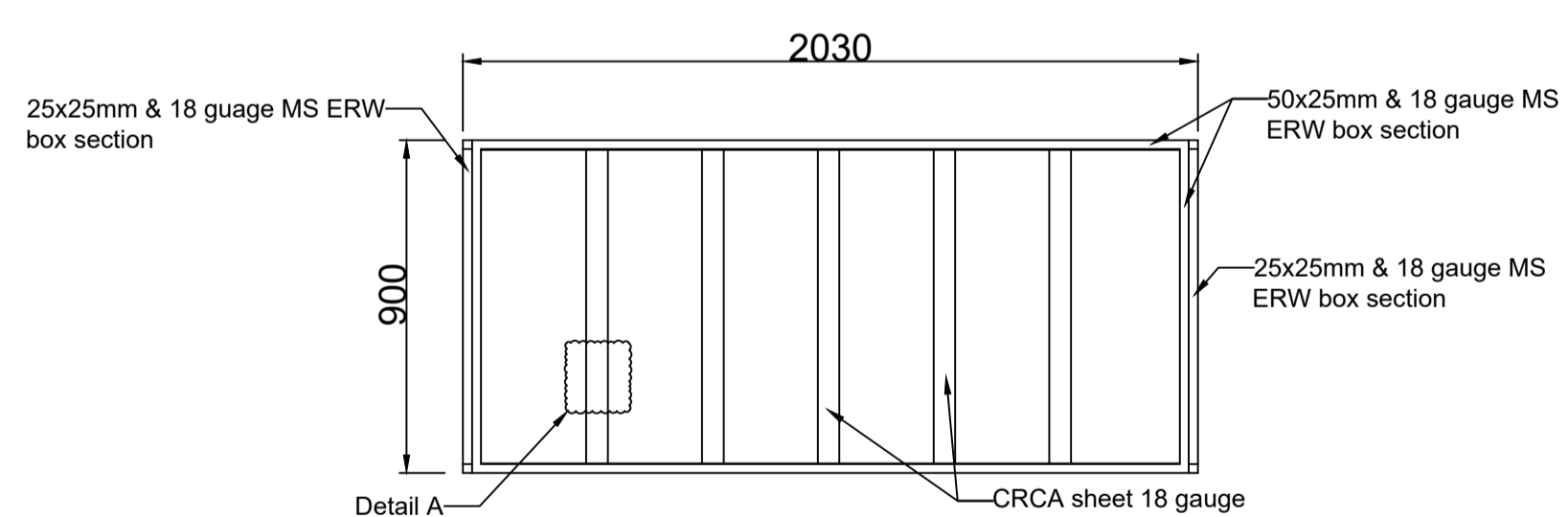
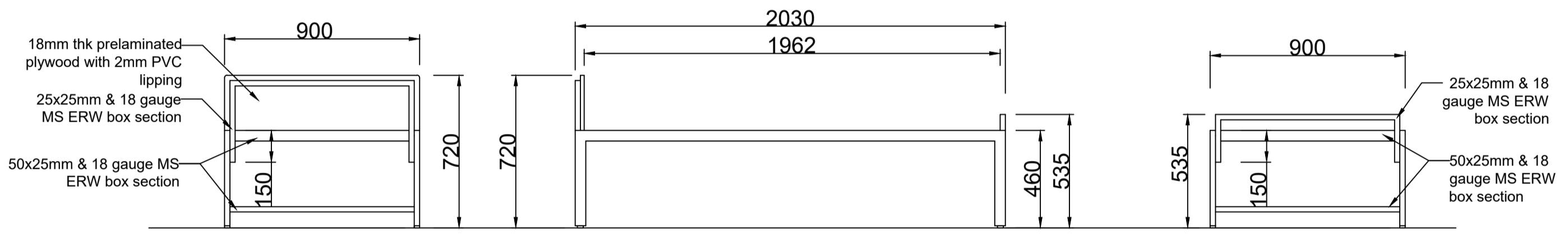
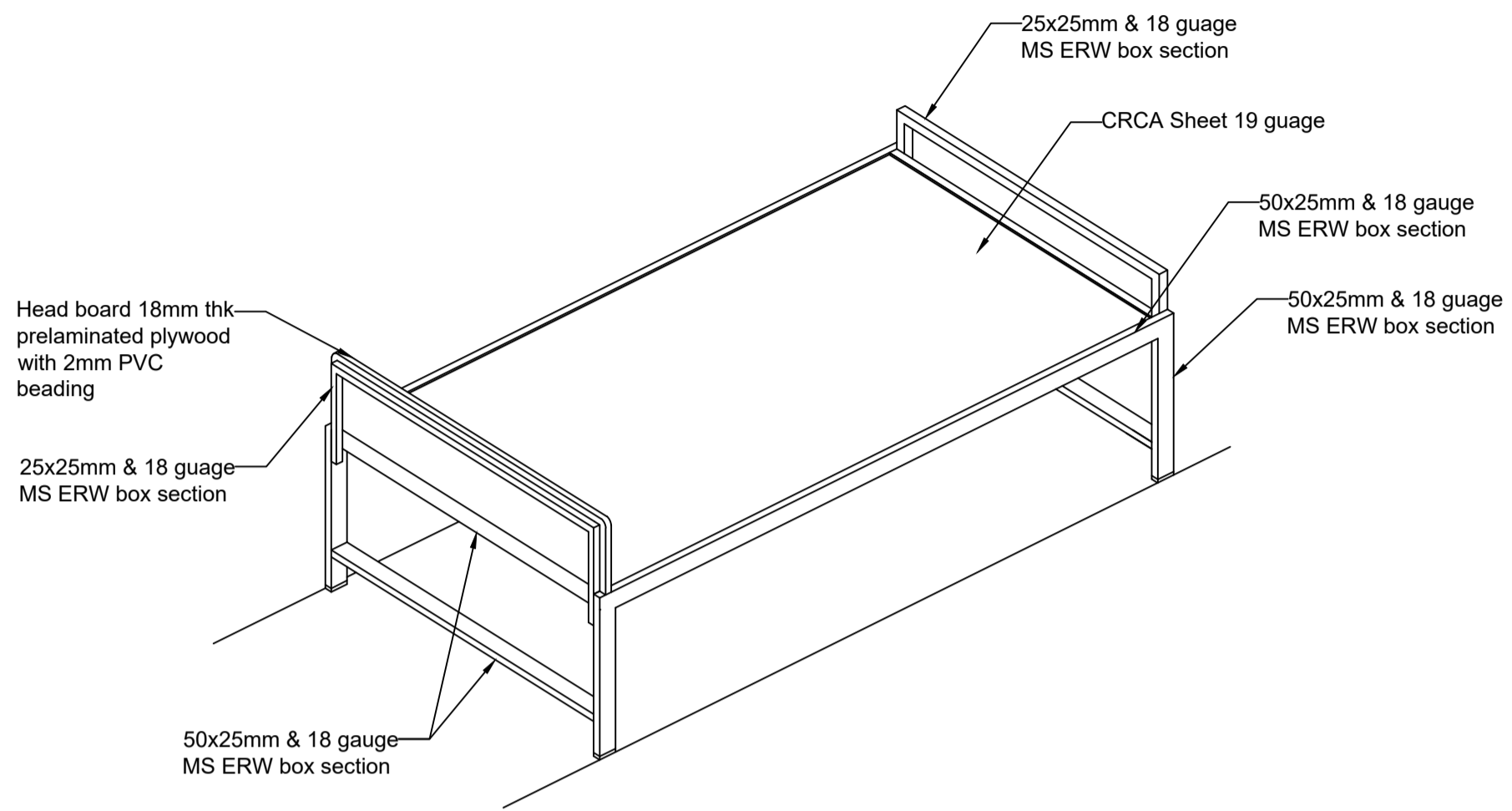
The clarifications sought by bidders and response given by IIT-DHARWAD are given in the annexure enclosed, which will be hosted in GeM portal and in IIT Dharwad's website.

Chairman sought active participation from all bidders present.

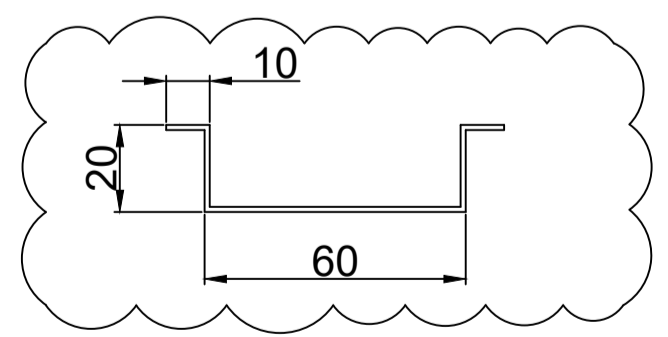
The Pre-Bid Conference ended with thanks to the Chair.

Prebid Queries - Hostel Furniture - 22.06.2022

S No.	Page No.	Item	As per Bid	Clarification Sought	Response from IIT Dharwad
1	16	Make list	Laminate Makes - Century/Green/Marino	Can Durian Laminate be added to the makes	Please proceed as per the make list given in the Tender Document
2	10	Hostel Wardrobe	Minimum thickness of 20 gauge	Need clarity 20 gauge for all sides or for doors only	Minimum 20 gauge has to be maintained throughout
3	10		Colour RAL 9002	Can we suggest similar kind of colour or nearest matching	Please proceed as per the specification in the Tender document
4	12	Hostel Table	Colour RAL 9002 & Walnut finish	Can we suggest similar kind of colour or nearest matching	Please proceed as per the specification in the Tender document
5	16	Hostel Chair	Chair Model	Can we suggest similar kind of model or nearest matching model	Please proceed as per the specification in the Tender document
6		Delivery period		Request to increase the delivery period & allow more than two lot	Delivery period will be increased to 45 days
7	10	Hostel Wardrobe	Product size 1300(W) x 500(D) x 2110(H) mm (**including the pedestal height) (divided to 2 parts of 650(W) x 500(D) x 2110(H)mm) Max tolerance — (-ve)10mm	For inter connection of 2 wardrobe nut bolt required or not	Wardrobe have to be fully welded and supplied as a single piece. No knockdown allowed.
8	10		Wardrobe Locking 3 point bolting arrangement with lever handle Mazak alloy for opening and closing of the door Also provide provision to lock door using padlock for doors of SS304 of 4mm thk (Refer drawing)	1.Can we use our standard 3 Point lock ? 2.Please Confirm Material of pad Lock SS 304 or MS ? (In Drawing , Not Mentioned)	1. Standard 3 point bolting arrangement with lever shall be provided 2. No padlock to be provided (Sleeves to put padlock shall be provided).
9	10		Locker Size — 370(W) x 450(D) x 200(H) mm With provision to lock door using padlock for doors of SS304 of 4mm thk (Refer drawing)	Please Confirm Material of pad Lock SS 304 or MS ? ? (In Drawing , Not Mentioned)	No padlock to be provided (Sleeves to put pad lock to be provided).
10	12	Hostel Table	Side storage Size — 320(W) x 500(D) x 582(H) mm 2 Nos drawer unit and 1 Nos swing door unit Provided with recessed plastic handle Also provide provision to lock drawers/doors using padlock (Refer drawing) With ball telescopic slides with average weight Of 0.6 Kg per set having average thickness of 1 mm steel member of channel	Please Confirm Material of pad Lock SS 304 or MS ? ? (In Drawing , Not Mentioned)	No padlock to be provided (Sleeves to put pad lock to be provided).
11	14	Hostel Cot	Product size 900(W) x 2030(D) mm (3(W) x 6.67(D) ft) 460(H)mm upto bed top 760(H)mm upto head-board top 535(H)mm upto foot-board top Max tolerance — (-ve)10mm	In Drawing 720(H)mm upto head-board top is given & in Description it mentioned 760(H)mm upto head-board top , so please confirm which size we should consider ?	Product size 900(W) x 2030(D) mm (3(W) x 6.67(D) ft) 460(H)mm upto bed top 720(H)mm upto head-board top 535 (H)mm upto foot-board top Max tolerance — (-ve)10mm
12	14		Supported on MS L-angle should have cross-section of 35 (H) x 25 mm (D), with a minimum 14 gauge	In Drawing its not shown? Should we make it as per our standard method ?	The sheet metal to be supported on the all four sides by the MS L-angle
13	8	Additional Terms & Condition	Certification for the indoor air quality to be attached by the bidder	Sir in this case the above certificate is only with one vendor ie godrej and no other have been this certificates. So we request you kindly amend the above clause so that maximum vendors can be participated.	For the indoor air quality the vendor has to ensure that the raw materials used in the manufacture of the products are of low VOC or VOC free. Vendor need to submit the MTC for the raw material used.
14				Integrity Pact to be submitted only by L1 or by all bidders	Integrity pact is part of the tender document and as such all the bidders have to submit Integrity Pact, on the stamp paper of prescribed value
15				BIS Certification on Finished Products or on Raw Materials	An undertaking to be given on letter head that the raw materials used are BIS certified. The list of products which are used in the production of the quoted products needs to be given along with the relevant BIS codes
16				The past experience sought is of the OEM or the Channel Partner	Past Experience of the Bidder or OEM shall be considered. Past experience should be for the same or similar items / category
17				Catalogue should be hard copy or soft copy	A soft copy of the Catalogue to be submitted
18				AIOTA only for chair	Yes
19				Welded/Knockdown format delivery	Wardrobe and Study Table shall be fully welded as per the specifications already provided. The Cot shall also be fully welded except for the head board and leg board part which may be assembled at the delivery site (please refer to the revised drawings attached)
20				Is Exemption provided to startups for turnover condition	Please see page No.1 of GeM Bid Document

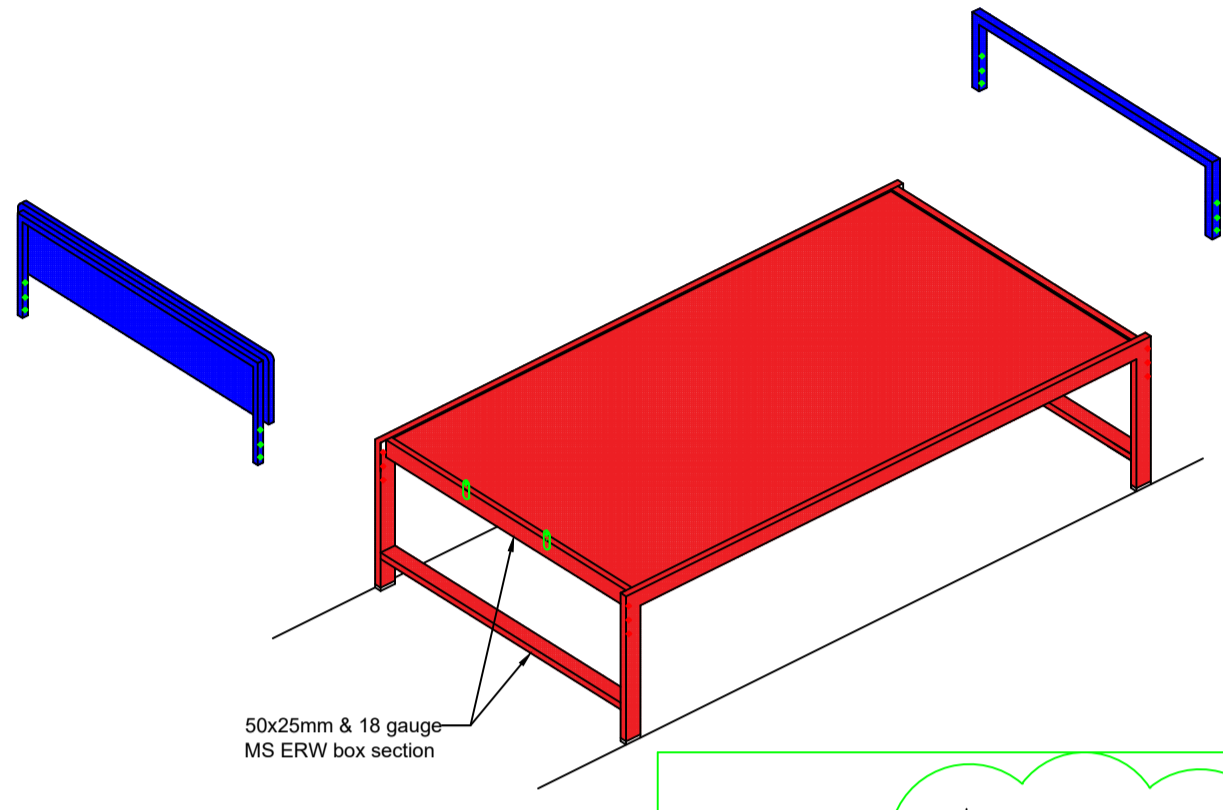
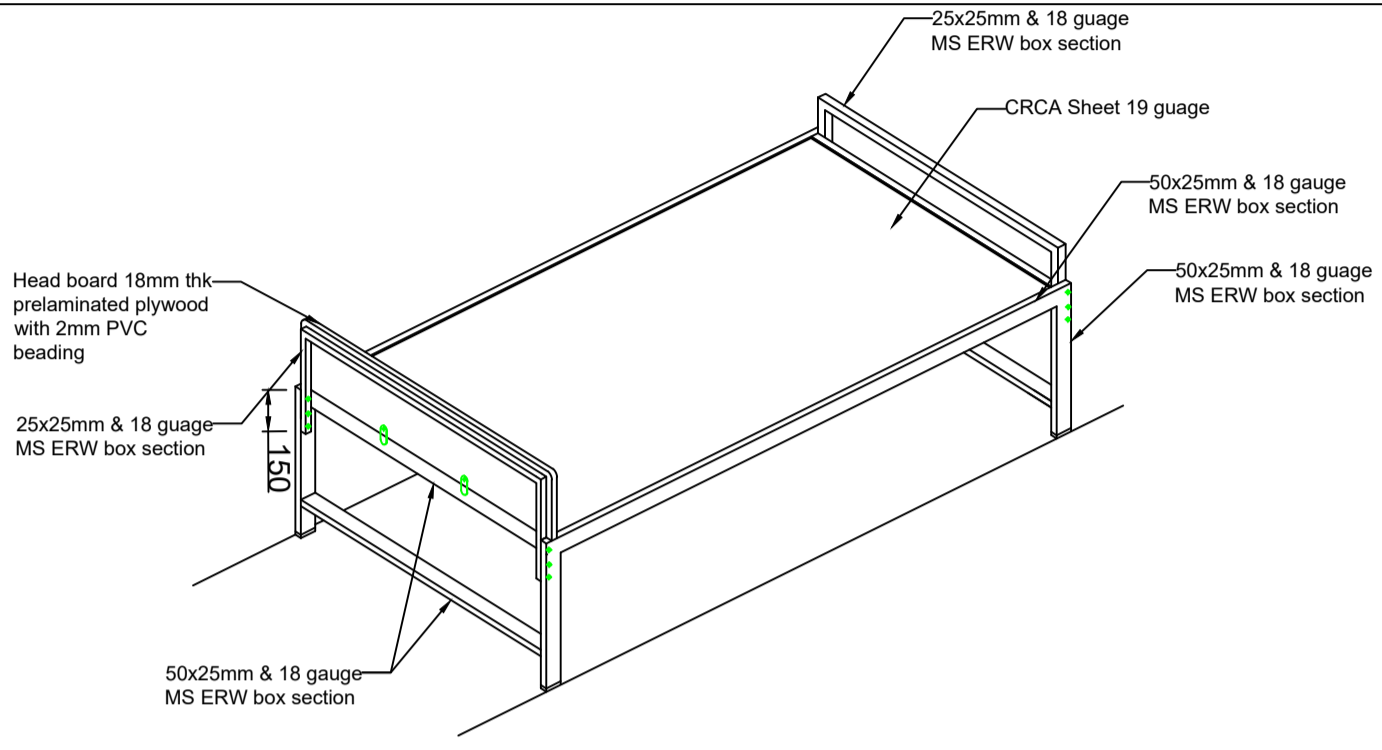


Cot frame detail

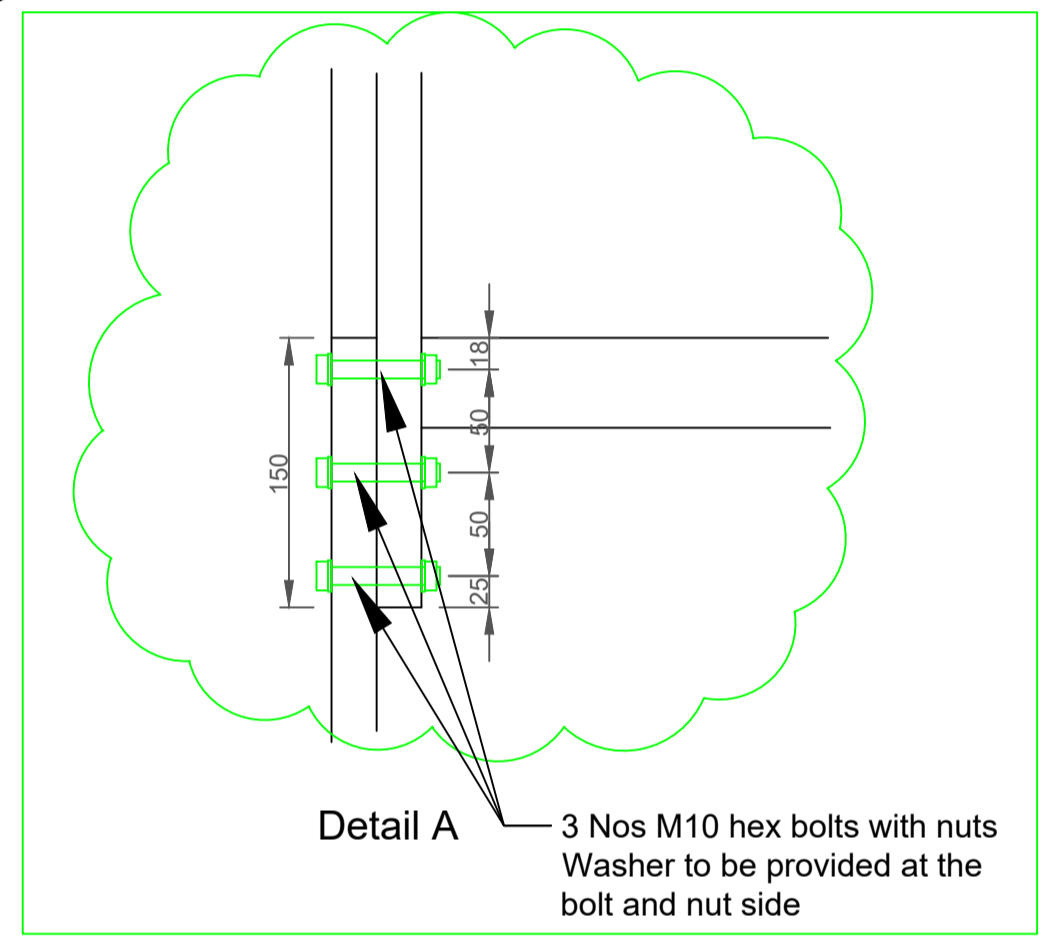
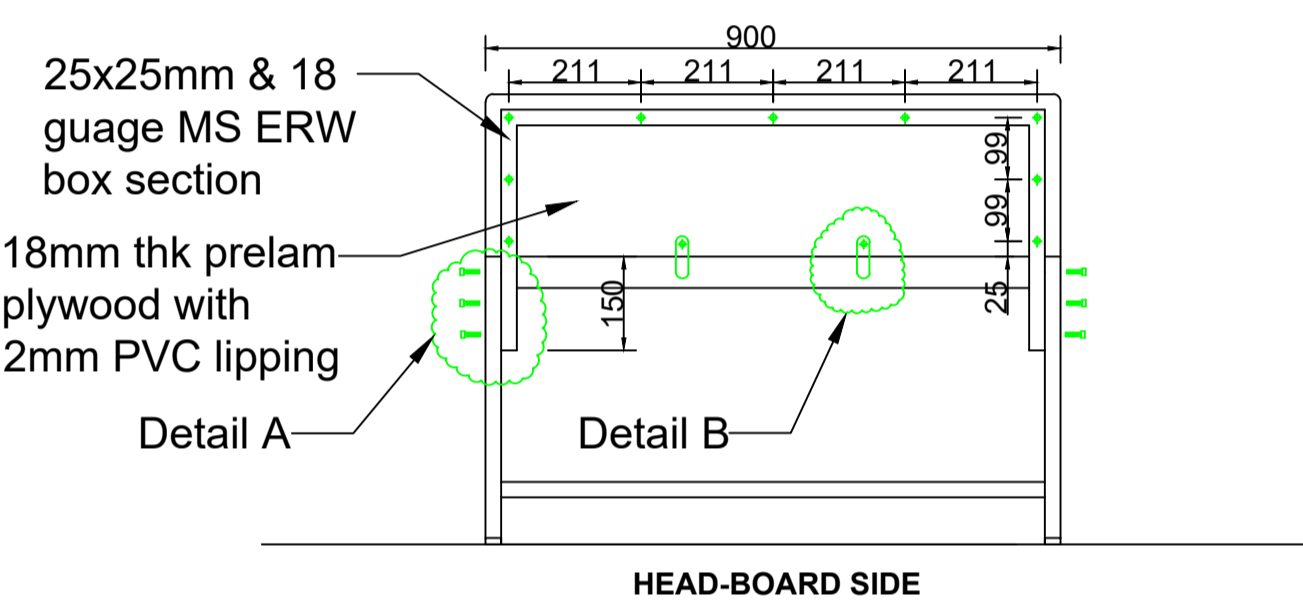


Detail A - Stiffner

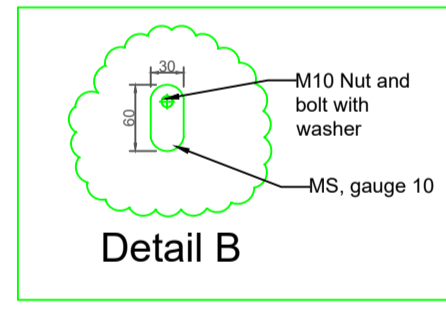
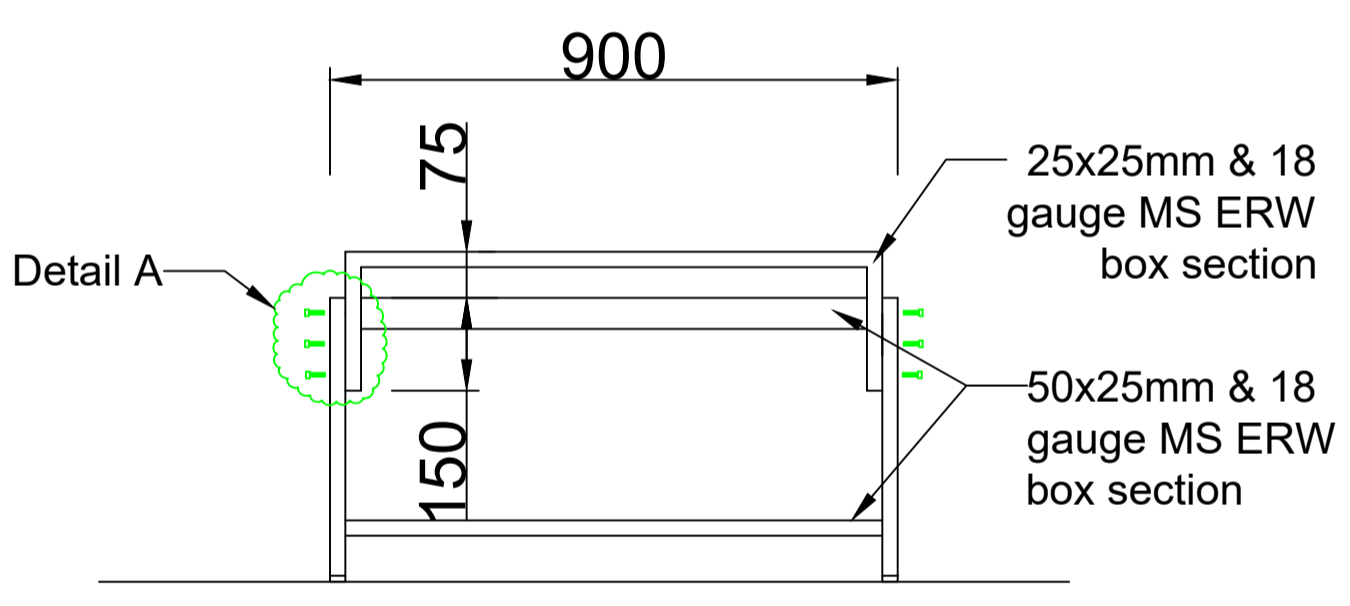
IIT DHARWAD	
HOSTEL FURNITURE	
HOSTEL COT	Sheet - 1 of 2



■ Factory welded
■ Assembled at site

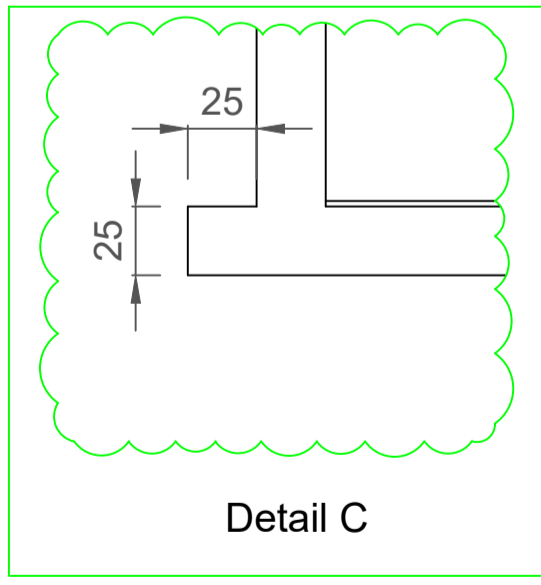
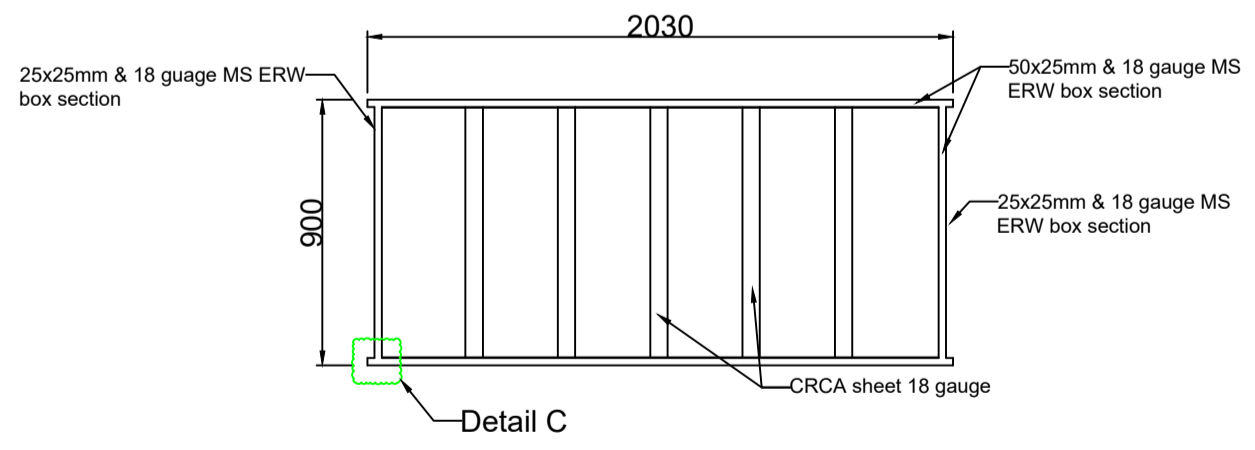


Detail A - 3 Nos M10 hex bolts with nuts
 Washer to be provided at the bolt and nut side



Detail B

- General Notes -**
1. All the bolts used to be of minimum M10 size
 2. Except for headboard and legboard the rest of the body have to be fully welded



Detail C

IIT DHARWAD	
HOSTEL COT	
ADDITIONAL DETAILS	Sheet - 2 of 2